

Installing DevPartner®

DevPartner Studio Professional Edition 9.0.1
DevPartner Studio Enterprise Edition 9.0.1
DevPartner for Visual C++ BoundsChecker Suite 9.0.1



Customer support is available from our Customer Support Hotline or via our FrontLine Support Web site.

Customer Support Hotline:
1-800-538-7822

FrontLine Support Web Site:
<http://frontline.compuware.com>

This document and the product referenced in it are subject to the following legends:

Access is limited to authorized users. Use of this product is subject to the terms and conditions of the user's License Agreement with Compuware Corporation.

© 2009 Compuware Corporation. All rights reserved. Unpublished - rights reserved under the Copyright Laws of the United States.

U.S. GOVERNMENT RIGHTS

Use, duplication, or disclosure by the U.S. Government is subject to restrictions as set forth in Compuware Corporation license agreement and as provided in DFARS 227.7202-1(a) and 227.7202-3(a) (1995), DFARS 252.227-7013(c)(1)(ii)(OCT 1988), FAR 12.212(a) (1995), FAR 52.227-19, or FAR 52.227-14 (ALT III), as applicable. Compuware Corporation.

This product contains confidential information and trade secrets of Compuware Corporation. Use, disclosure, or reproduction is prohibited without the prior express written permission of Compuware Corporation.

DevPartner[®] Studio and BoundsChecker are trademarks or registered trademarks of Compuware Corporation.

Adobe Acrobat[®] Reader copyright © 1987-2009 Adobe Systems Incorporated. All rights reserved. Adobe, Acrobat, and Acrobat Reader are trademarks of Adobe Systems Incorporated.

All other company or product names are trademarks of their respective owners.

US Patent Nos.: 5,987,249, 6,332,213, 6,186,677, 6,314,558, and 6,016,466

January 2, 2009

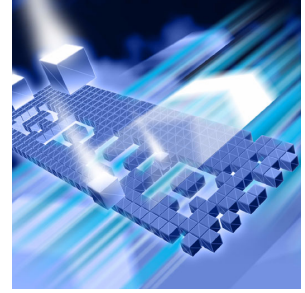


Table of Contents

Preface

| | |
|---------------------------------------|-----|
| Who Should Read This Manual | v |
| What's New in DevPartner Studio | v |
| Conventions Used In This Manual | vi |
| For More Information | vii |

Chapter 1

DevPartner Studio Installation

| | |
|--|----|
| System Requirements | 1 |
| Supported Environments | 2 |
| Microsoft .NET Framework | 3 |
| Receiving Your License File | 3 |
| DevPartner Studio License Considerations | 4 |
| Installation and Licensing for Remote Data Collection | 5 |
| DevPartner Studio Triggering of Firewall Alarms | 6 |
| Installed Features | 6 |
| DevPartner Studio Enterprise Edition Features | 6 |
| DevPartner for Visual C++ BoundsChecker Suite | 6 |
| Side-by-Side Visual Studio Operation | 7 |
| Installation | 7 |
| Troubleshooting Your DevPartner Studio Installation | 9 |
| Migrating DevPartner Code Review Custom Rules and User Preferences | 10 |
| Prior to the Migration | 10 |
| Migrating the Rules Database | 11 |
| Migrating the Preferences Database | 12 |

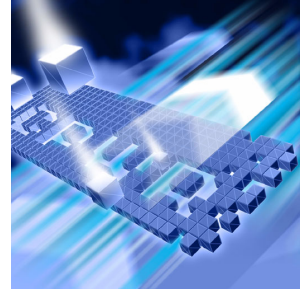
Chapter 2

Maintaining the Installation

| | |
|----------------------------------|----|
| Accessing Maintenance Mode | 13 |
| Modifying an Installation | 14 |
| Repairing an Installation | 14 |
| Removing an Installation | 15 |

Index

Preface



- ◆ Who Should Read This Manual
- ◆ What's New in DevPartner Studio
- ◆ Conventions Used In This Manual
- ◆ For More Information

This manual describes how to install your Compuware® DevPartner Studio® software.

Who Should Read This Manual

This manual is intended for those installing DevPartner Studio in either a single-seat or concurrent use environment.

This guide does not contain usage information. You can find that information in the online help facility and product-specific *User's Guide*.

Compuware assumes that you are familiar with the Microsoft Windows interface and the installation of Windows software. If this is not the case, familiarize yourself with the documentation for Microsoft Windows before reading this guide.

What's New in DevPartner Studio

DevPartner Studio version 9.0.1 introduces the following new features:

- ◆ DevPartner Studio provides full Microsoft Visual Studio 2008 support. This includes full support in analysis of applications developed using Microsoft Visual Studio, and full integration into the Visual Studio 2008 IDE.

- ◆ DevPartner Studio now supports development and testing of 32-bit Windows applications on 64-bit platforms. 32-bit applications running under WoW64 (32-bit emulator) are also supported.

Note: 64-bit applications are not supported.

- ◆ DevPartner Studio now provides code quality reporting capabilities that leverage DevPartner XML data to produce HTML reports for Development and QA Managers.
- ◆ DevPartner Studio supports Microsoft Visual Studio 2008 project types. The project types supported by each DevPartner feature are now documented in the DevPartner online help system and in the *Understanding DevPartner* manual.
- ◆ DevPartner Studio supports 32-bit Windows applications on 64-bit platforms on the Windows Server 2008 operating system.
- ◆ DevPartner Studio provides LINQ block level support for analysis.
- ◆ DevPartner Studio provides performance and coverage analysis support for AJAX language features in Visual Studio 2008.
- ◆ In the System Comparison utility you now have the ability to View All Items when you view a comparison of two snapshots.
- ◆ System Comparison has added the following new Categories of Differences to the list of differences for diagnosing system configurations:
 - ◇ .NET Security Policy
 - ◇ Hardware Differences
 - ◇ User Environment
 - ◇ Windows Update

Conventions Used In This Manual

This book uses the following conventions to present information.

- ◆ Screen commands and menu names appear in **bold typeface**. For example:
Choose **Item Browser** from the **Tools** menu.
- ◆ File names appear in monospace typeface. For example:
The *Understanding DevPartner* manual (Understanding DevPartner.pdf) describes...
- ◆ Variables within computer commands and file names (for which you must supply values appropriate for your installation) appear in *italic monospace type*. For example:

Enter `http://servername/cgi-win/itemview.dll` in the Destination field...

For More Information

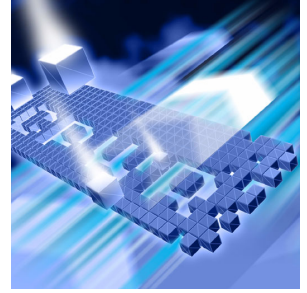
You can use the feature-level online help to learn more about the DevPartner Studio software's functions and procedures.

You can use the following resources to learn more about DevPartner Studio components. Manuals in Adobe Acrobat (.pdf) format are available through the InfoCenter option in the **Start > Compuware DevPartner** menu, and are also included on your DevPartner Studio DVD.

- ◆ The *Distributed License Management Licensing Guide* describes DevPartner licensing.
- ◆ The *Understanding DevPartner* manual contains information about using the DevPartner software.
- ◆ The *DevPartner Studio Quick Reference* provides an at-a-glance summary of DevPartner features accompanied by quick-start advice.
- ◆ The *DevPartner Advanced Error Detection Techniques* manual provides concepts and procedures to help you understand the use of your Compuware® DevPartner Error Detection software.
- ◆ The *Known Issues* file contains a list of known issues and technical notes for DevPartner Studio. The file is available in your installation directory, or you can access the latest Known Issues file from a link in the DevPartner ReadMe file.

Chapter 1

DevPartner Studio Installation



- ◆ System Requirements
- ◆ Supported Environments
- ◆ Receiving Your License File
- ◆ DevPartner Studio License Considerations
- ◆ DevPartner Studio Triggering of Firewall Alarms
- ◆ Installed Features
- ◆ Installation
- ◆ Troubleshooting Your DevPartner Studio Installation
- ◆ Migrating DevPartner Code Review Custom Rules and User Preferences

This chapter describes system requirements and installation information for your Compuware® DevPartner Studio® software.

System Requirements

All editions of DevPartner Studio 9.0.1 require the following minimum configuration:

Table 1-1. Hardware

| | |
|----------------------|--|
| Processor | 1.0 GHz Pentium-class processor (32-bit) 2.0 GHz Intel EM64T or AMDx64 processor (64-bit) |
| Memory | 512 MB (32-bit) 1 GB (64-bit) |
| Available Disk Space | 2 GB |

Table 1-1. Hardware

| | |
|---------|------------------------|
| Display | 1024x768, 16-bit color |
| Other | CD drive |

Table 1-2. Operating Systems

| Operating System | Editions | Browser and IIS |
|--|--|-----------------------------|
| Windows XP (SP2 and SP3) (32-bit and 64-bit) | Professional, Tablet PC | IE 6.0 IIS 5.1 |
| Windows Server 2003 (SP1 and SP2) (32-bit) (*64-bit) | Standard, Enterprise, Web *Standard and Enterprise only | IE 6.x, 7.0 IIS 6.x, 7.0 |
| Windows Vista (SP1) (32-bit and 64-bit) | Business, Enterprise, Ultimate | IE 7.0 IIS 7.0 |
| Windows Server 2008 (32-bit and 64-bit) | Standard, Enterprise | IE 7.0 IIS 7.0 |

Supported Environments

DevPartner Studio supports the released version of the following environments.

Note: For a comprehensive list of supported languages and project types, refer to Appendix B of the *Understanding DevPartner* manual.

Table 1-3. Visual Studio Integration

| Version | Editions | .NET Framework |
|--------------------|---|--|
| Visual Studio 2008 | Professional Edition, Team Edition for Software Architects, Team Edition for Software Developers, Team Edition for Software Testers, Team Suite | .NET Framework 3.5 (Compact Framework is not supported) |

Table 1-3. Visual Studio Integration

| Version | Editions | .NET Framework |
|--------------------------------------|---|--|
| Visual Studio 2005 (Base and SP1) | Professional Edition, Team Edition for Software Architects, Team Edition for Software Developers, Team Edition for Software Testers, Team Suite (64-bit development is not supported) | .NET Framework 2.0 (Base and SP1) and 3.0* (Compact Framework is not supported) |
| Visual Studio Team Foundation Server | n/a | n/a |

* See "[Microsoft .NET Framework](#)" on page 3 for additional information.

For information on features installed with each environment, see "[Installed Features](#)" on page 6. For a detailed list of all supported Visual Studio technologies, refer to the *Understanding DevPartner* manual.

Microsoft .NET Framework

DevPartner Studio requires that the Microsoft .NET Framework 1.1 be installed on the host machine. This Framework provides system-level code needed by DevPartner Studio. During installation, DevPartner Studio will check for the .NET Framework 1.1 on your machine. If it is not found, DevPartner Studio will add it during the installation. .NET Framework 1.1 will coexist with the .NET Framework 2.0, .NET Framework 3.0, and .NET Framework 3.5.

Receiving Your License File

The DevPartner Studio software requires a license file supplied by Compuware in order to execute beyond a 14-day evaluation period. Compuware provides a license file, `license.xml`, for each license of DevPartner Studio that you purchase.

Your license file(s) will arrive by e-mail around the time that your product arrives, and is delivered to the person you designated when you placed your order.

Note: If you purchased DevPartner Studio from a reseller, you can request a license file from the Compuware Web site at http://frontline.compuware.com/sw/license_default.asp, or by calling Worldwide License Management at 1-800-538-7822.

Complete information about installing and managing licenses can be found in *Distributed License Management Licensing Guide*.

Install the license file that you receive from Compuware by running the License Administration Utility, which can be started using the Windows Start menu (Compuware>License Administration>License Administration Utility). Note that you are limited to one 14-day evaluation period.

If your license file has not arrived by the time you would like to install DevPartner Studio, please contact Worldwide License Management: 1-800-538-7822. Outside the USA and Canada, please contact your local Compuware office or agent.

If you have other Compuware products that use DLM and you choose to store your DevPartner Studio license file in the same folder as those other license files, we recommend that you rename the DevPartner Studio license file to prevent conflicts or accidental merging or replacing of license files.

If you already have a licensed Compuware product and would like to merge the license files, contact Customer Support (1-800-538-7822).

DevPartner Studio License Considerations

All DevPartner Studio products use Compuware Distributed License Management (DLM) to manage software licenses. DevPartner Studio ships with version 4.2 of DLM. For complete information on license installation, refer to the *Distributed License Management Licensing Guide* on the DevPartner Studio DVD.

You should be aware of the following considerations regarding your DevPartner Studio software license:

- ◆ DevPartner Studio can run with one of three types of permanent license:
 - ◇ A locally-installed license, called a node-locked (single-seat) license (does not require a license server installation).
 - ◇ A concurrent license stored within a License Manager database on a network server.
 - ◇ A borrowed concurrent license running on a computer disconnected from a network.
- ◆ DevPartner Studio can run with a 14-day evaluation license. The 14-day evaluation period begins when any DevPartner Studio feature is used.

Note: The System Comparison feature operates under your DevPartner Studio license. Using the System Comparison user interface triggers the beginning of the 14-day evaluation period, regardless of whether the rest of the DevPartner Studio features have been installed. Starting and using only the System Comparison service, however, does not consume a license and therefore does not trigger the beginning of the 14-day evaluation period.

- ◆ DevPartner Studio supports a 30-minute idle session license timeout policy for concurrent licenses. If a concurrent license is being used for an Integrated Development Environment-hosted DevPartner Studio product, the license is released and returned to the license pool if no DevPartner Studio features have been used for 30 minutes (e.g., no analysis sessions active, no session files open).
- ◆ For data collection from a remote machine, DevPartner Studio requires the DevPartner Remote Server license, as described in [“Installation and Licensing for Remote Data Collection”](#).
- ◆ Running DevPartner Studio over a Windows Terminal Services connection uses one concurrent license per user. Node-locked licenses do not support use over a Terminal Services connection.
- ◆ Running DevPartner Studio over a Windows Remote Desktop connection uses one concurrent license or a node-locked license.
- ◆ If you purchased DevPartner Studio as part of certain product bundles, such as a Continuous Integrated Testing solution, simultaneous use of all products in the bundle will require only one license.
- ◆ DevPartner Studio uses all available license paths to verify license information. If you experience lengthy DevPartner Studio start-up delays, check your license path for invalid entries.

Installation and Licensing for Remote Data Collection

If you run components of your applications on remote systems, you can collect performance, coverage, and memory data from the remote machines and view that data on the user/client machine where you have installed DevPartner Studio. To collect remote data, purchase the DevPartner Remote Server license for each remote machine from which you would like to collect remote data, or purchase one or more concurrent Remote Server licenses.

DevPartner Studio Triggering of Firewall Alarms

To collect session data from remote machines, the DevPartner Studio software connects to a previously installed service whenever DevPartner Studio runs, either within Visual Studio or via `DPAnalysis.exe`. This service listens for interprocess communication traffic at the internet address 0.0.0.0 port 18441. This service connection may trigger some firewall alarms. You can configure your firewall to trust this address to discontinue these alarms. If your firewall is set to maximum security levels, it may prevent DevPartner Studio remote data collection. Reconfigure your firewall to enable data exchange at the address 0.0.0.0 port 18441.

Installed Features

DevPartner Studio Enterprise Edition Features

DevPartner Studio Enterprise Edition incorporates all of the Professional Edition features, but also includes TrackRecord and Reconcile.

To install TrackRecord and Reconcile, refer to the DevPartner Studio Enterprise Edition DVD. The TrackRecord and Reconcile manuals are in Adobe Acrobat (.pdf) format.

- ◆ The *TrackRecord Installation & Configuration Guide* is intended for administrators who are installing or configuring TrackRecord.
- ◆ The *Reconcile Installation and Configuration Guide* is intended for administrators who are installing or configuring Reconcile.

For more information on DevPartner Studio Enterprise Edition, refer to the “About Devpartner Studio Enterprise Edition” chapter in the *Understanding DevPartner* manual.

DevPartner for Visual C++ BoundsChecker Suite

The performance analysis, coverage analysis, and error detection features of DevPartner Studio are installed with the DevPartner for Visual C++ BoundsChecker Suite. These features are available in both the Microsoft Visual Studio 2005 or Visual Studio 2008 IDE.

Side-by-Side Visual Studio Operation

When the DevPartner Studio installation program encounters both Visual Studio 2005 and Visual Studio 2008 on a target computer, it installs the DevPartner Studio software into both IDEs. This double installation allows you to take advantage of the ability to develop code simultaneously in both environments.

If you install Visual Studio 2005 or 2008 after DevPartner Studio is installed, you can modify the DevPartner Studio installation at any time. See [Chapter 2, “Maintaining the Installation”](#) for more information about modifying a DevPartner Studio installation.

Installation

This section presents pre-installation information and describes the DevPartner Studio installation procedure.

Before Installation

Before installing DevPartner Studio, note the following:

- ◆ If you will be using DevPartner Studio with Visual Studio 2005 or Visual Studio 2008 Team System, install Visual Studio Team Explorer before installing DevPartner Studio.
- ◆ Internet Explorer and the Microsoft Script Debugger are required by DevPartner Studio. If supported versions of these products are not detected during installation, DevPartner Studio will display a message with a link to more information.

Caution: If you are upgrading from a previous version of DevPartner Studio, refer to [“Migrating DevPartner Code Review Custom Rules and User Preferences”](#) on page 10 *before* uninstalling your previous version of DevPartner Studio.

To Install DevPartner Studio

- 1 If you are running a previous version of DevPartner Studio, uninstall your previous version and restart your machine. (If you would like to retain your existing code review databases, refer to [“Migrating DevPartner Code Review Custom Rules and User Preferences”](#) on page 10 before uninstalling DevPartner Studio.)

2 Log in to an account with Windows administrator ('admin') privileges. You must be logged in with Windows administrator privileges to install DevPartner Studio.

3 Disable your virus protection software.

The DevPartner Studio installation program uses scripts that might trigger warnings from virus protection software. Remember to re-enable virus protection after you install the DevPartner Studio software.

Note: Systems with the Data Execution Prevention (DEP) setting configured as `/NoExecute=Always On` and the CPU's Execute Disable bit enabled might prevent DevPartner Studio from installing.

See [article number 875352 in the Microsoft Knowledge Base](#) for a detailed description of the Data Execution Prevention feature.

If this setting is changed back to `AlwaysOn` after installation it will cause the DevPartner Studio package to fail to load into Visual Studio.

4 Insert the DevPartner Studio DVD to start the installation and select the product to be installed. If installing DevPartner Studio Professional Edition, you can install DevPartner Studio or DevPartner System Comparison.

5 On the Setup Type dialog box, you must select which version of DevPartner Studio you want to install:

◇ **DevPartner Studio 8.2:** Integrates with Visual Studio 2005, 2003, and 6.0.

◇ **DevPartner Studio 9.0:** Integrates with Visual Studio 2008 and 2005.

6 Click **Next**. A series of screens will guide you through the installation process.

Note: Windows installer prohibits installation to virtual drives created using the **subst** command. Only install DevPartner Studio to an actual hard drive location.

The installation program detects Visual Studio 2005 and Visual Studio 2008 and, by default, installs all features compatible with all environments. To prevent DevPartner Studio components from being installed, use the Component Selection screen to select the components *not* to be installed.

The installation will prompt you to install a new code review rules database or use an existing rules database. This option is useful when you are sharing a rules database. If you choose to use a rules database

built with a previous version of DevPartner Studio, refer to ["Migrating DevPartner Code Review Custom Rules and User Preferences"](#) on page 10.

- 7 After a DevPartner Studio Professional Edition installation, you are prompted to install DevPartner System Comparison, which is a tool that allows you to identify differences between computer system or differences between different configurations of the same computer. Installation for System Comparison starts by default. If you do not want to install it, you can cancel the installation.

If an updated version of System Comparison already exists on your system, the installation does not occur.

Troubleshooting Your DevPartner Studio Installation

DevPartner Studio captures a Microsoft Installer (MSI) log of details about the DevPartner Studio installation. You can examine this log to help diagnose installation problems, or provide this log to a customer support engineer should you need to contact Compuware for support.

Depending on the DevPartner Studio installation, the file is named `DPSxxinstall.log` or `DPVCxxinstall.log` (*xx* represents the release number) and is placed in the following location:

On Windows XP and Windows Server 2003:

`C:\Documents and Settings\user\Local Settings\Temp\`

On Windows Server 2008 and Windows Vista systems:

`C:\Users\user\AppData\Local\Temp\DPSxxinstall.log`

In addition to the MSI log, compile the following information:

- ◆ What software and version are you installing?
- ◆ What is your operating system and service pack?
- ◆ What previous version of the DevPartner Studio software do you have installed?
- ◆ Did you have any problems removing the previous version?
- ◆ Indicate if you will submit an MSI log as an attachment.
- ◆ What error message did you receive during the install?
- ◆ Was the installation from an account with full administrative privileges?
- ◆ Was the installation done locally or remotely? If done remotely what software was used?
- ◆ Did you disable your anti-virus software before the installation?
- ◆ Is your DEP setting configured as `/NoExecute=OptIn`?

Migrating DevPartner Code Review Custom Rules and User Preferences

If you have a previous installation of DevPartner Studio and you have customized your code review rules and preferences databases, you should migrate your database files to the current release of DevPartner Studio. This ensures that your changes are not lost during the upgrade.

DevPartner Studio provides two utilities that automate this migration process:

- ◆ `crupdaterules.exe`: Migrates previous release rules into the current release rules database.
- ◆ `crupdateprefs.exe`: Migrates previous release user settings into the current release preferences database.

Using these utilities will migrate your customized rules and preferences into the new rules and preferences databases.

Prior to the Migration

- 1 Copy the existing `CRRules.dpmdb` and `CRPrefs.dpmdb` files to another location for safe-keeping before you uninstall DevPartner Studio.

By default, database files created with previous versions of DevPartner Studio are located in `\Program Files\Compuware\DevPartner Studio\CodeReview`.

Note: For installs on 64-bit versions of Windows, DevPartner Studio is located at: `\Program Files (x86)\Compuware\DevPartner Studio\CodeReview`.

(The DevPartner Studio uninstall process makes a backup copy of your rules and preferences databases. If you have already uninstalled DevPartner Studio without making a backup copy of your databases, you can use the automatically created backup files found in the DevPartner Studio installation directory in `\Code Review\Backup`.)

- 2 Uninstall the previous version of DevPartner Studio.
- 3 Install DevPartner Studio 9.0.1. On the installation screen that prompts for creating a new rules database or using an existing one, select the new rules database option. You will be updating the new database after the installation.

The new databases are placed in the following location:

On Windows XP and Windows Server 2003 systems:

`C:\Documents and Settings\All Users\Shared Documents\Code Review`

On Windows Server 2008 and Windows Vista systems:

C:\Users\Public\Public Documents\Code Review

- 4 Copy the new CRRules.dpmdb and CRPrefs.dpmdb files created by the DevPartner Studio 9.0.1 installation to a location other than the one used in step 1, so you do not overwrite the original rules and preferences database files.

Proceed to “[Migrating the Rules Database](#)” and/or “[Migrating the Preferences Database](#)” to perform the desired migration.

Migrating the Rules Database

- 1 Start a DOS session from the console window.
- 2 At the DOS prompt, change to the directory where you installed DevPartner Studio. By default, DevPartner Studio is installed in \Program Files\Compuware\DevPartner Studio\CodeReview. This directory contains the migration utility.

Note: For installs on 64-bit versions of Windows, DevPartner Studio is located at: \Program Files (x86)\Compuware\DevPartner Studio\CodeReview.

- 3 From that directory, enter the command crupdaterules followed by the path to the prior version of the rules database. For example:

```
crupdaterules C:\MyOldRulesDb\CRRules.dpmdb
```

The command string you use must point to the location of the rules database file being migrated and should be entered as a single line.

Your existing rules will be migrated into the new DevPartner Studio code review rules database.

Migrating the Preferences Database

- 1 Start a DOS session from the console window.
- 2 At the DOS prompt, change to the directory where you installed DevPartner Studio. By default, DevPartner Studio is installed in \Program Files\Compuware\DevPartner Studio\CodeReview. This directory contains the migration utility.

Note: For installs on 64-bit versions of Windows, DevPartner Studio is located at: \Program Files (x86)\Compuware\DevPartner Studio\CodeReview.

- 3 From that directory, enter the command `crupdateprefs` followed by the path to the prior version of the preferences database. For example:

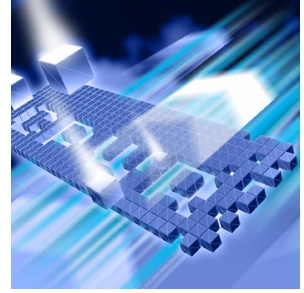
```
crupdateprefs "C:\MyOldPrefsDb\CRPrefs.dpmdb"
```

Note that the command string you use must point to the location of the preferences database file being migrated.

Your existing preferences will be migrated into the new DevPartner Studio code review preferences database.

Chapter 2

Maintaining the Installation



- ◆ Accessing Maintenance Mode
- ◆ Modifying an Installation
- ◆ Repairing an Installation
- ◆ Removing an Installation

Accessing Maintenance Mode

Required: Compuware recommends that you exit all non-essential Windows programs before running this setup program. Some Windows programs may interfere with the installation process.

To access Maintenance Mode from the Windows Control Panel:

- 1 Click the Windows **Start** button and choose **Programs>Compuware>DevPartner Studio>Modify Install**. The DevPartner Studio installation wizard appears.

Note: Compuware recommends accessing the DevPartner Studio installation wizard only from the Windows Start button.

- 2 Click **Next**. The **Program Maintenance** page appears.

From this page of the wizard, you can access the three maintenance mode options: **Modify**, **Repair**, and **Remove**. For more information about these options, see the appropriate section in this chapter.

Modifying an Installation

Rather than uninstall and re-install the product, you can modify a DevPartner Studio installation by adding or removing an optional component.

Modifying Products With Optional Components

- 1 Access maintenance mode using the method described at the beginning of this chapter.
- 2 Select the **Modify** option and click **Next**. The Component Selection page appears allowing you to add or remove components.
- 3 Click the icon next to each feature and select the appropriate options to do one of the following:
 - ◇ Install the feature to the local hard drive
 - ◇ Install the feature and all subfeatures to the local hard drive
 - ◇ Make the feature unavailable for install. This option removes any previously installed components.
- 4 Click **Next**. The Ready to Modify the Program page appears.
- 5 Click **Install** to begin the installation. Setup adds or removes the appropriate components.

After modifying, you may be prompted to restart your computer. If you are prompted to restart your computer, you can choose to restart it now (recommended) or to restart it later.
- 6 Click **Finish** to complete the modification.

Tip: Descriptions of each feature display in the Component Selection page when selected. You can also click the Help button on the page for more information.

Repairing an Installation

There may be times when you need to repair a damaged DevPartner Studio installation. This could be due to an inadvertent deletion or corruption of the program. To repair a DevPartner Studio installation:

- 1 Access maintenance mode using the method described in “Accessing Maintenance Mode” at the beginning of this chapter.
- 2 Select the **Repair** option and click **Next**. The Ready to Repair the Program page appears.
- 3 Click **Install** to begin the installation. Setup adds or removes the appropriate components.

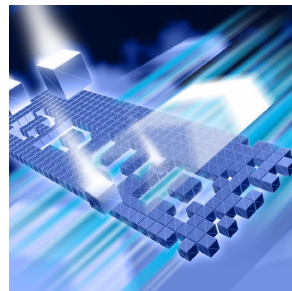
- 4 After repairing, you may be prompted to restart your computer. If you are prompted to restart the computer, you can choose to restart it now (recommended) or to restart it later.
- 5 Click **Finish** to complete the maintenance.

Removing an Installation

If you want to remove DevPartner Studio installation from your computer, follow these steps:

- 1 Access maintenance mode using the method described at the beginning of this chapter.
- 2 Select the **Remove** option. Click **Next**. The **Remove the Program** page appears.
- 3 Select the check box to save a backup copy of the DevPartner Code Review rules database.
- 4 Click **Remove**. Setup removes the DevPartner Studio installation.
- 5 After uninstalling, you may be prompted to restart your computer. If you are prompted to restart your computer, you may choose to restart it now (recommended) or to restart it later.
- 6 Click **Finish** to complete the maintenance.

Index



A

- access methods
 - maintenance 13
- administrator privilege 8

C

- crupdateprefs 10, 12
- crupdaterules 10
- customer support 4

D

- data execution prevention setting 8
- DEP setting 8
- DevPartner
 - migrate custom rules 11
 - migrate custom user preferences 12
 - upgrading 7

E

- evaluation license 4

I

- installing
 - modify product components 14
 - repairing a product installation 14

L

- license
 - evaluation 4
 - timeout policy 4
- license file
 - getting customer support 4
 - installing 3
 - obtaining 3

M

- Maintaining the Installation 13
- maintenance
 - access methods 13
 - modify 14
 - remove 15
 - repair 14
- migrate code review preferences 12
- migrating code review rules 11
- modify
 - maintenance 14

P

- previous version of DevPartner 7

R

- remove
 - maintenance 15
- repair
 - maintenance 14
- requirements 1

S

- scripts, virus protection interference 8
- support 4
- system comparison utility 9
- system requirements 1

T

- timeout of license 4

V

- Visual Studio 2005, installed after DevPartner 7

